

The G-WASH 12 allows automating the decoating and degreasing processes while reducing water consumption by 80%



**G-WASH 12**

**Grünig**

Grünig-Interscreen AG  
Ringgenmatt 14  
CH-3150 Schwarzenburg  
Switzerland

Phone +41 31 734 2600  
Fax +41 31 734 2601  
[www.grunig.ch](http://www.grunig.ch)  
[mail@grunig.ch](mailto:mail@grunig.ch)

# G-WASH 12

## Automatic decoating machine



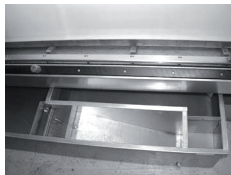
Control unit



Hand lance



Spraying carriage



Recycled water Recycleclean



Nozzle

### Particular features

- The G-WASH 12 has been designed for automatic de-coating, developing and degreasing (option) of serigraphy screens.

#### One single machine = 3 processes!

- Compact, virtually maintenance-free design, in front loader version.
- Various pressures are available: 10 or 30 bar from both sides as well as 70 bar high-pressure from the print side.
- The roller shutter door can be completely opened, which allows an optimal handling as well as a simple and efficient cleaning and maintenance.
- The chemical product is sprayed from both sides by means of double membrane pumps and fan jet nozzles. A separate pump is provided for each type of chemical.
- The quantity and atomizing of the chemical can be adjusted by means of separate pressure regulators. The fine-tuning of the chemicals among each other is also programmable.
- Whenever necessary, a separate high-pressure manual lance is provided for a manual treatment of the screens.
- Oscillating low-pressure nozzle tubes are provided for particularly delicate developing processes.
- Grünig special nozzles made from V2A with service cover have been designed for ease of maintenance and cleaning of the nozzles.
- The working width of the machine can be divided into sectors A, B and C, and the height in 2 sectors
- The sub-construction of the screen washing machine is a rugged welded construction made of chromium steel sheet V2A.

### Programs

- 4 different programs F1 - F4 that can be freely programmed according to the customer's requirements.
- The process steps, the desired pressure, the chemical and all the reaction times, washing moves and spray carriage speed are programmable.

### Option L

- In the washing bay, a full-surface luminous screen is installed to provide an optimal checking possibility for the screens.

### Option C 2

- Upon request, the machine can be equipped with a second chemical system (degreasing).

### Option C 3

- Upon request, the machine can be equipped with a third chemical system.

### Option Z

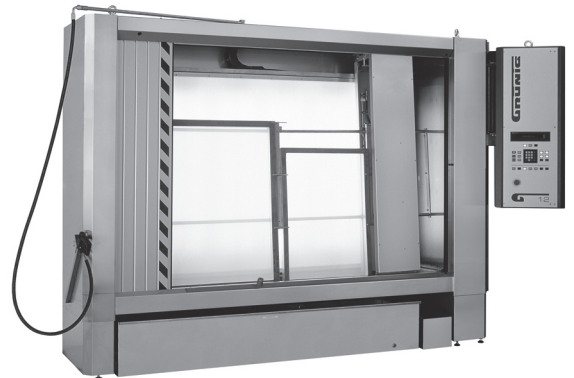
- Additional screen holder for the reception of several small screens.

### Option M

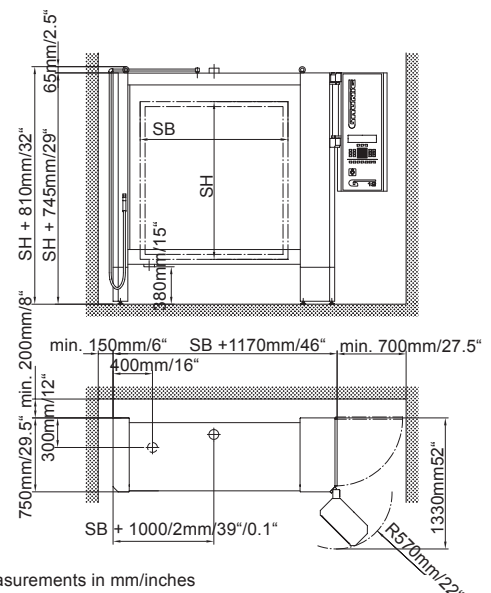
- Master-Frame for the reception of 16 to 20 CD screens.

### Option K

- The water conditioning and preparation system G-WASH 030 RECYCLEAN reduces the water consumption and as a result the waste water quantity by up to 90%. The entire water quantity passes through different filters and sedimentation levels before it is taken back into the recycled water circuit. A pressure build-up pump as well as a 100 micron fine-filter made of V2A are included in the scope of delivery. This option represents a considerable contribution towards a reduction of the operating costs.



Screen format	SB Screen width	mm	1500-5000/59"-197"
	SH Screen height	mm	1600-2400/63"-94"
	Frame profile thickness	mm	10-55/0.3"-2.1"
Options	L, C2, C3, Z, M, K		
Sizes	Total width	mm	SB + 1170/46"
	Total height	mm	SH + 745/29"
	Total depth	mm	750/29.5"
Energy supply	3 x 400 V / 3 x 220 V / 50-60 Hz		
Compressed air	Connection value	Bar	6
	Air consumption	m3/h	3
Water consumption	Connection value	Bar	3
	Consumption with SH < 1800	l/min	44
	SH ≥ 1800	l/min	66



All measurements in mm/inches



The machine is in compliance with the EU guidelines for machinery (CE-conformity).

Technical data subject to change without notice

May 05