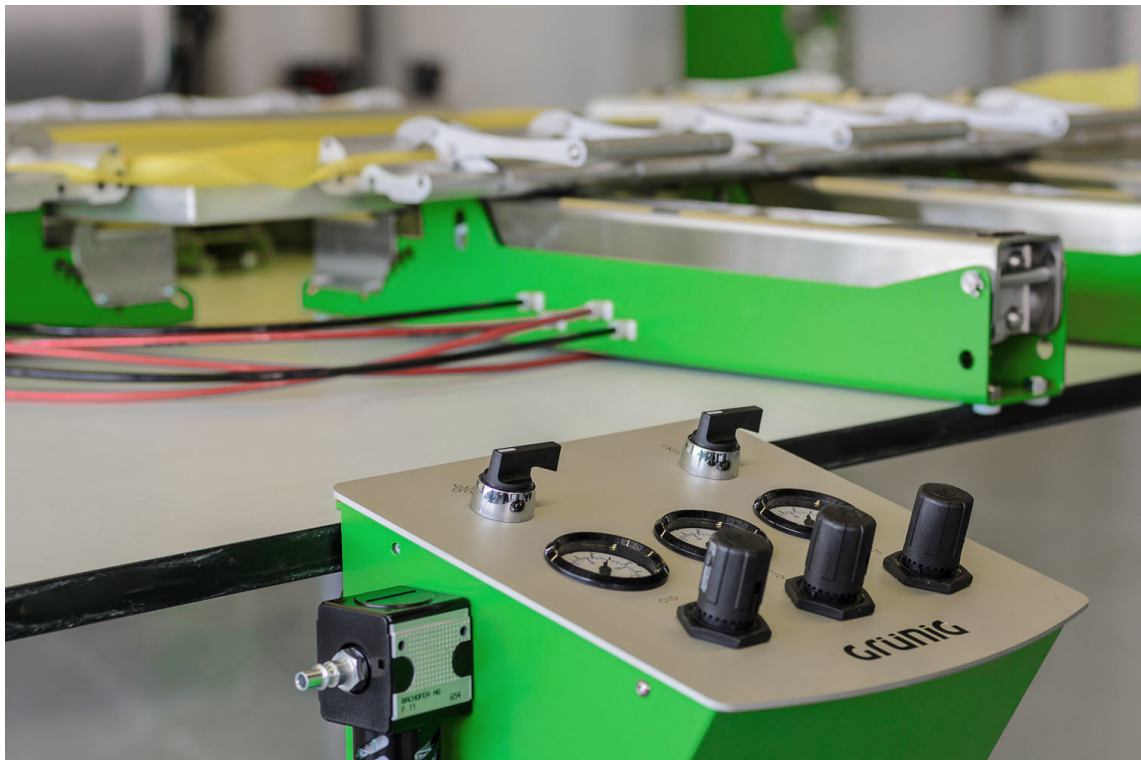


G-STRETCH 202 PLUS: the cost-efficient solution for stretching large screens without frame contact



G-STRETCH 202 PLUS

Grünig

Grünig-Interscreen AG
Ringgenmatt 14
CH-3150 Schwarzenburg
Switzerland

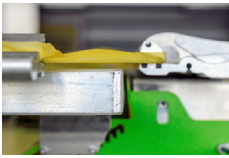
Phone +41 31 734 2600
Fax +41 31 734 2601
www.grunig.ch
mail@grunig.ch

G-STRETCH 202 PLUS

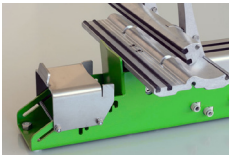
Pneumatic long-stroke stretching clamp



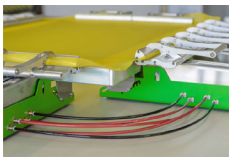
Control desk A3



Stretching without frame contact



Height adjustment



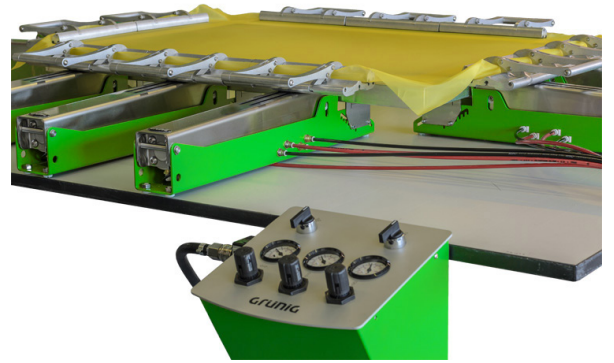
DUPLEX stretching clamp

Summary of the most important features:

- Pneumatic stretching system for all the screen printing meshes available on the market
- Low-cost introduction into automatic stretching
- The uncomplicated and user-friendly control based on two separate control circuits allows adjusting the stretching force individually for weft and warp direction.
- The pneumatic system guarantees efficient work processes. The desired stretching force must only be programmed for the first screen of a given series
- The stretching procedure includes an automatic pre-stressing of the screen frame.
- The width of the standard clamp is 250 mm. To optimize the insertion width, a traction-compatible clamp with a width of 155 mm is available.
- The stretching stroke per clamp is 125 mm (totally 250 mm per axis).
- The frame support of each individual stretching clamp can be easily adjusted in increments of 5 mm, between 20 and 50 mm, to match the respective frame profile height.
- The stretching process takes place without frame contact. Upon reaching the final stretching value, the mesh can be lowered onto the frame and pressed against the latter with a programmable pneumatic pressure.
- A retention arm prevents the stretching clamp from rebounding in the event of mesh tearing.
- Ergonomic design and top-quality materials guarantee a maximum degree of user-friendliness and durability.

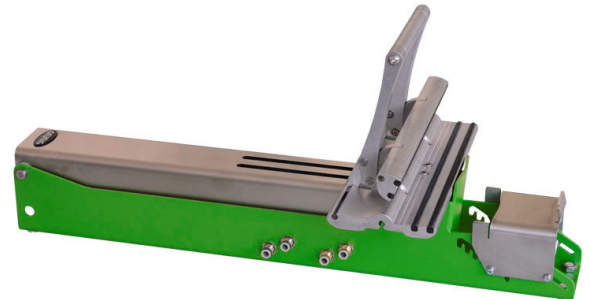
Version A3

- Thanks to the manual control desk, not only the stretching pressure in weft and warp direction but also the contact pressure of the mesh onto the frame can be individually and independently programmed.
- The stretching process and mesh contact pressure are controlled by means of two rotary switches.
- The double-acting cylinder actuation improves the synchrony of the clamp movements, which has a positive effect on the stretching result.

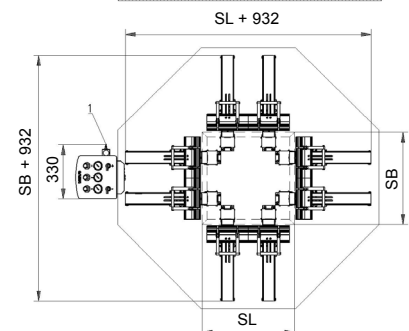
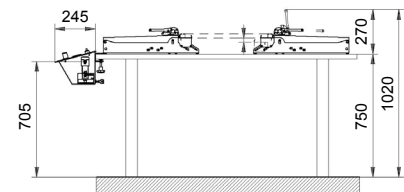


Option Z155 / Z250

- The system can be expanded at any time by adding additional stretching clamps in increments of 155 mm or 250mm.



Single clamp	Length	mm	580
	Width	mm	155 / 250
	Weight	kg	7.8
	Frame profile height	mm	20-50
	Clamp travel distance	mm	125
	Maximum mesh tension	N	60
Control desk	Width	mm	330
	Height	mm	220
	Depth	mm	245
Compressed air	Pressure	Bar	9
	Consumption per clamp	l/stroke	0.25
Permanent sound pressure level		dB (A)	<70



All measures in mm



The machine is in compliance with the EU machinery directives (CE-conformity).

Technical changes are reserved

April 17