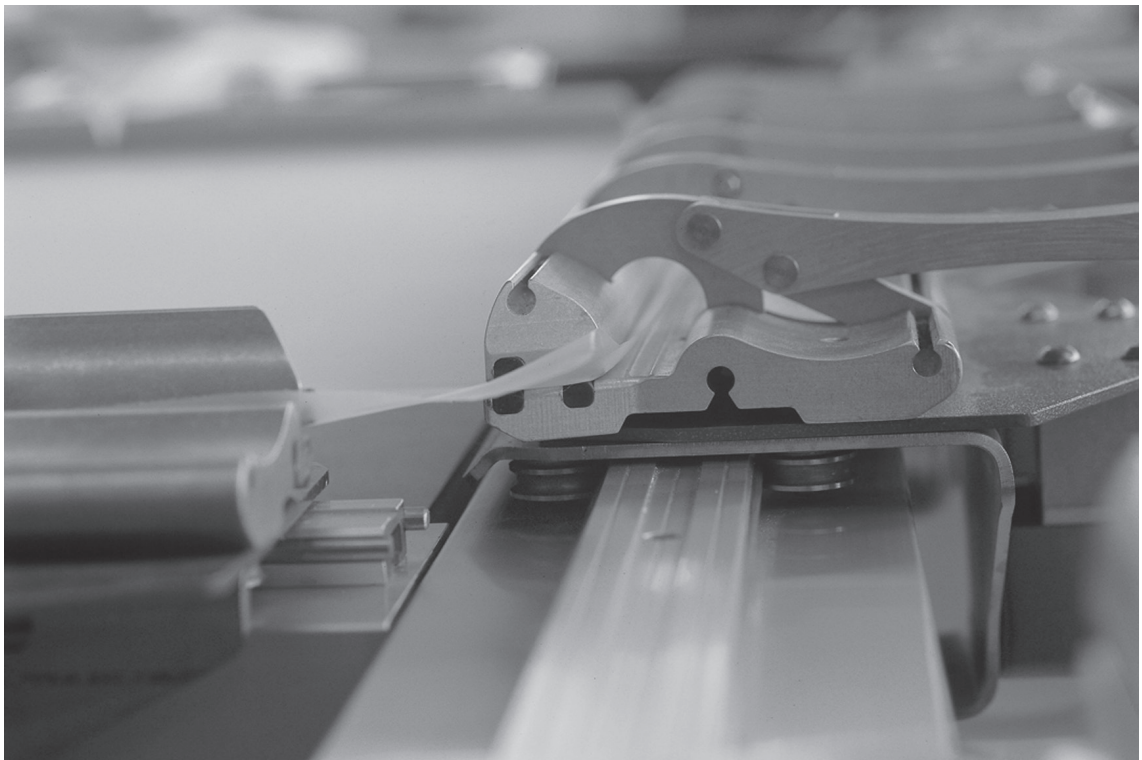


The G-STRETCH 201 is an extremely rugged DUPLEX stretching clamp that answers all the stretching requirements



G-STRETCH 201

Grünig

Grünig-Interscreen AG
Ringgenmatt 14
CH-3150 Schwarzenburg
Switzerland

Phone +41 31 734 2600
Fax +41 31 734 2601
www.grunig.ch
mail@grunig.ch

G-STRETCH 201 DUPLEX Clamp



Clamp 125 mm



Rear clamp

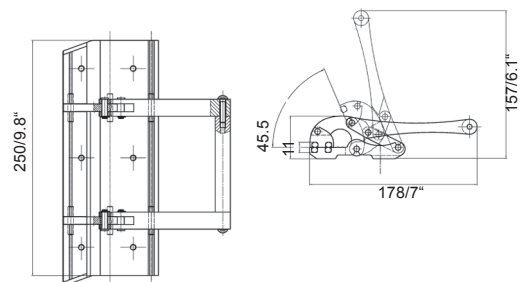


Corner clamps

Particular features

- The standard width of the DUPLEX clamp is 250 mm. Thanks to this width, less clamps are required, which guarantees that the stretching process can be carried out smoothly and without delay.
- Extremely robust clamp construction using special aluminium profiles.
- Meshes with a tension of up to 50 N/cm² are retained without problem or slipping.
- The ergonomic construction allows easy opening and closing of the clamp, with a minimum expenditure of force.
- Due to the wide opening of the upper stretching beam and the mesh insert edge which is integrated into the profile, the mesh can be inserted rapidly and in true alignment with the thread.
- The mobile upper stretching beam prevents the stretched mesh from slipping on the entire width of the clamp. The higher the tension values of the mesh, the bigger the gripping power of the clamp.
- All the pivots are fixed and need no readjustment.
- On both sides the clamps are chamfered by 30°. This allows an even stretching of the mesh from one clamp to the next.
- The rubber clamping pieces can be easily replaced without using any tools or glue. Depending on the type of mesh, different clamping pieces made of different materials or with different degrees of hardness can be used.
- Due to the use of special deep groove ball-bearings, the DUPLEX clamps can be easily shifted on the lateral guideway system. This allows to easily compensate a high extension of the mesh in either weft or warp direction when the tension is increased.
- In order to achieve a precise length adjustment to the screen frame formats, DUPLEX clamps with a width of 125 mm are available.
- Already existing stretching devices (H-21, H-24 and H-28) can be retrofitted with the DUPLEX clamps.

- The guideway rails of these existing stretching devices can also be replaced by the new special guideways.
- **For any inquiries or orders for already existing stretching devices, please specify the year of construction and the type of appliance.**



The machine is in compliance with the EU machinery-directives (CE conformity)

Technical data subject to change without notice

May 05

All measurements in mm / inch